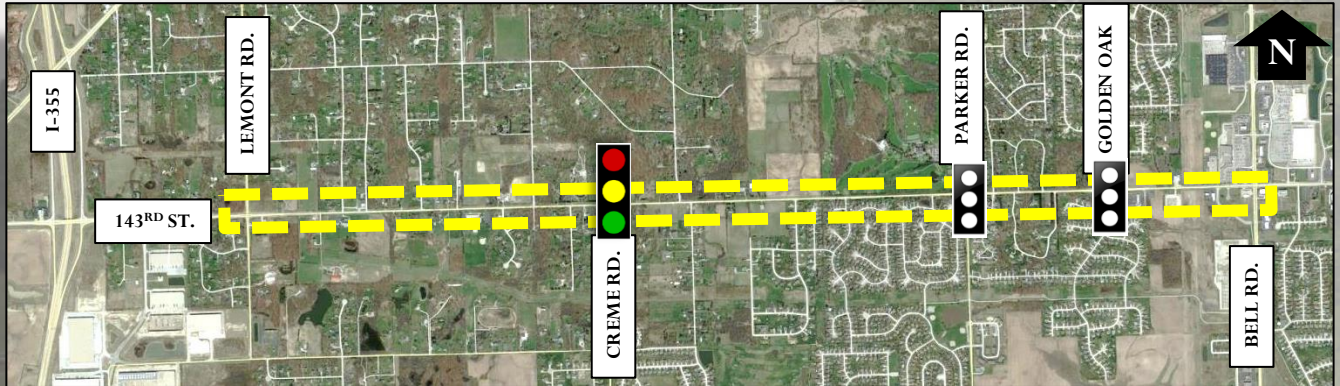




PROPOSED 143RD STREET IMPROVEMENTS

LEMONT ROAD (STATE STREET) TO BELL ROAD



PUBLIC INFORMATIONAL MEETING

WEDNESDAY, MARCH 7, 2018

4:00 PM – 7:00 PM

HADLEY MIDDLE SCHOOL

15731 BELL ROAD

HOMER GLEN, IL 60491

PURPOSE OF THE MEETING:

- To provide an update on the project status
- To present changes made subsequent to the first public meeting (January 2014)
- To obtain comments on the revised, proposed plan.
- To show, discuss, and obtain comments on the recommended noise wall locations

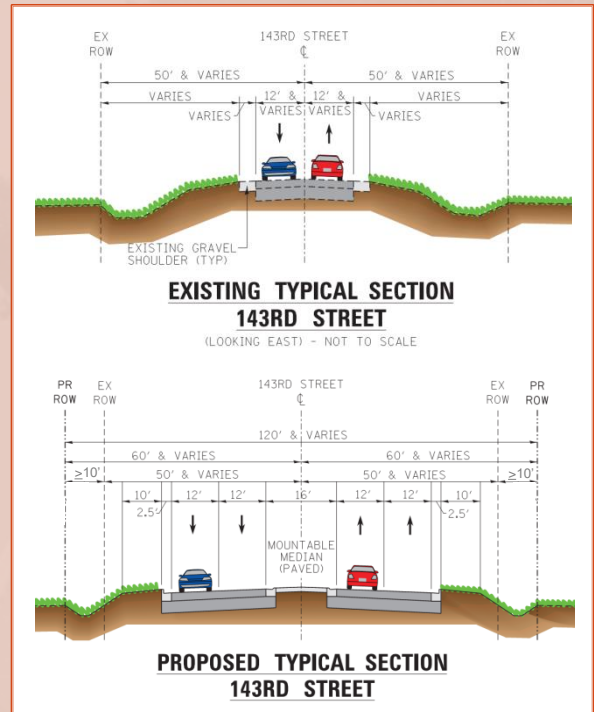
PROJECT HISTORY:

In 2008, the 143rd Street full-access interchange was constructed as part of the I-355 south extension improvements, just west of the study limits. In anticipation of the corridor's future travel demands, the County initiated a Preliminary Engineering Study for 143rd Street, between Lemont Road and Bell Road. The study proposes a continuous four lane roadway section with a mountable median, curb and gutter, and storm sewers to be constructed to match the adjacent sections of 143rd Street at Lemont Road (westernmost limits, completed in 2014) and at Bell Road (easternmost limits, construction begins 2018).

PROJECT PURPOSE & NEED:

The purpose of this project is to address capacity and safety deficiencies associated with the existing conditions by constructing a roadway facility that reduces the potential for accidents and encourages more efficient traffic flow.

- **Capacity** – In order to meet projected 2040 traffic demands, the County proposes to add capacity to 143rd Street by adding a second travel lane in each direction, a mountable median and channelized left-turn lanes. The increased roadway capacity will serve to improve mobility and decrease vehicular delays and travel times.
- **Safety** – Within the study limits, rear-end crashes were identified to be the most common crash type over the last five years. This project will reduce the potential for accidents by increasing roadway capacity, improving signal operations, and adding and lengthening left-turn storage bays throughout the corridor.



PROJECT SCHEDULE:

**APPROVAL
EARLY 2019
WE ARE HERE**

24 MO.

18 - 24 MO.

PHASE I
Preliminary
Engineering &
Environmental
Study

PHASE II
Contract Plan
Preparation
Right-of-Way
Acquisition

PHASE III
Construction

Upon completion of the Phase 1 Study, the County will separate the project corridor into three (3) smaller segments for design and construction. The County included segments between Lemont Road and Creme Road; and Creme Road and Parker Road in the approved Fiscal Year 2018-2023 Will County Transportation Improvement Plan (TIP). Additionally, funds are currently programmed to begin design and land acquisition for the easternmost segment, between Parker Road and Bell Road.

QUESTIONS, COMMENTS, & INFORMATION

We invite you to submit comments about the project at this public meeting or by mail to:

WILL COUNTY DIVISION OF TRANSPORTATION
ATTN: CHRISTINA KUPKOWSKI

16841 W LARAWAY ROAD, JOLIET, IL 60433

PHONE: 815-727-8476 | EMAIL: CKUPKOWSKI@WILLCOUNTYILLINOIS.COM

PROPOSED IMPROVEMENTS:

- Complete Pavement Reconstruction
- New additional travel lane in each direction
- New Left-Turn Lane Locations
- **New Paved Mountable Median**
- Modernized Existing Traffic Signals
- New Traffic Signal at Creme Road
- Roadway Culvert Replacements
- Stormwater Detention stored in Oversized Piping
- 10-ft wide "shelf" behind the curb on either side of the roadway to accommodate a future sidewalk.
- **Recommended noise wall locations (south side of 143rd Street, between Saddlebrook Lane and S. Provencal Drive)**

Updates made to the original design subsequent to the January 2014 Public Meeting.